

Service
Service
Service



Philips Consumer Lifestyle

Service Manual

PRODUCT INFORMATION

- On account of the short high starting current, the house fuse should be of a 16 A-delayed type.
- The appliance will work in operating position only.
- Always check if the protecting glass pane (item 8) is fitted after a repair.
- HPA lamps only start when they have cooled down sufficiently.
- Never touch a HPA lamp with your fingers. If necessary, clean the lamp with alcohol.
- Colour differences may occur when new lamps are installed. This phenomenon is characteristic of HPA lamps and disappears after a short period of use.
- After assembly the glass filter should be free from finger prints and dust. Clean the glass filter with alcohol, if necessary.
- Never look in the direction of the radiation part while the lamps are on without wearing protecting goggles.
- In case of insufficient cooling (e.g. when the ventilation apertures are blocked or when the fan is defective) the safety device (item 9) will automatically switch off the solarium. Once the cause of overheating has been removed and the solarium has cooled down sufficiently, the appliance will switch on again automatically.
- When the appliance is a few years old, we advise you to apply a drop of thin oil to the bearings of the fan.
- Let the solarium cool down first (approx. 15 mins) before closing and storing it away.
- Only move the solarium when folded.

- In case of complaints about little or no tanning, the output can be measured by means of a so-called UVX-36 meter. The figure given on the title sheet is the minimum value to be measured in the centre of the radiation field after 5 mins of warming up and with the appliance connected to the rated voltage.

TECHNICAL INFORMATION

- | | |
|------------------------|--|
| - Input consumption | : 1650 W / 230 V |
| - UV-A source | : 3x HPA Flexpower 400-600 |
| - Ballast | : 3x BHA 500L / 230 V |
| - Starter | : 3x SN 58-spec. |
| - Timer | : 45 mins motor driven |
| - Radiation area | : 185 x 75 cm |
| - Protecting goggles | : HB072 - 4822 690 80147 |
| - Output UVX-36 meter | : min. 4.2 mW/cm ² at 65 cm |
| - Production code YYWW | : on type plate |

RADIATION PART

DISASSEMBLY

- Remove the 10 screws with which the housing (item 7) is fastened to the cover (item 1).
The housing will continue to cling to the cover.
- Disconnect the connectors of the connecting cable and motor.
- Undo the other connections.

REPAIR INSTRUCTIONS

- It can be established whether lamps, ballasts or starters are defective by interchanging them.
- When replacing a lamp holder (item 10) 2 tubular rivets must be drilled out.
The bracket is fastened with 2 M2.5 x 10 bolts.

FLOOR PART

DISASSEMBLY

- Remove 6 square and 3 round ornamental props (item 20).
- Loosen 14 visible screws by which the cover (item 18) is fastened.
- Pass the mains cord cover (item 31) and the timer cover (item 16) through the opening below, after the screws have been taken out.
- Loosen the screw under the timer cover.
- Remove the cover (item 18) in horizontal position so that the screws will not fall out.
(As screws with varying length are used, it is not possible to interchange them.)

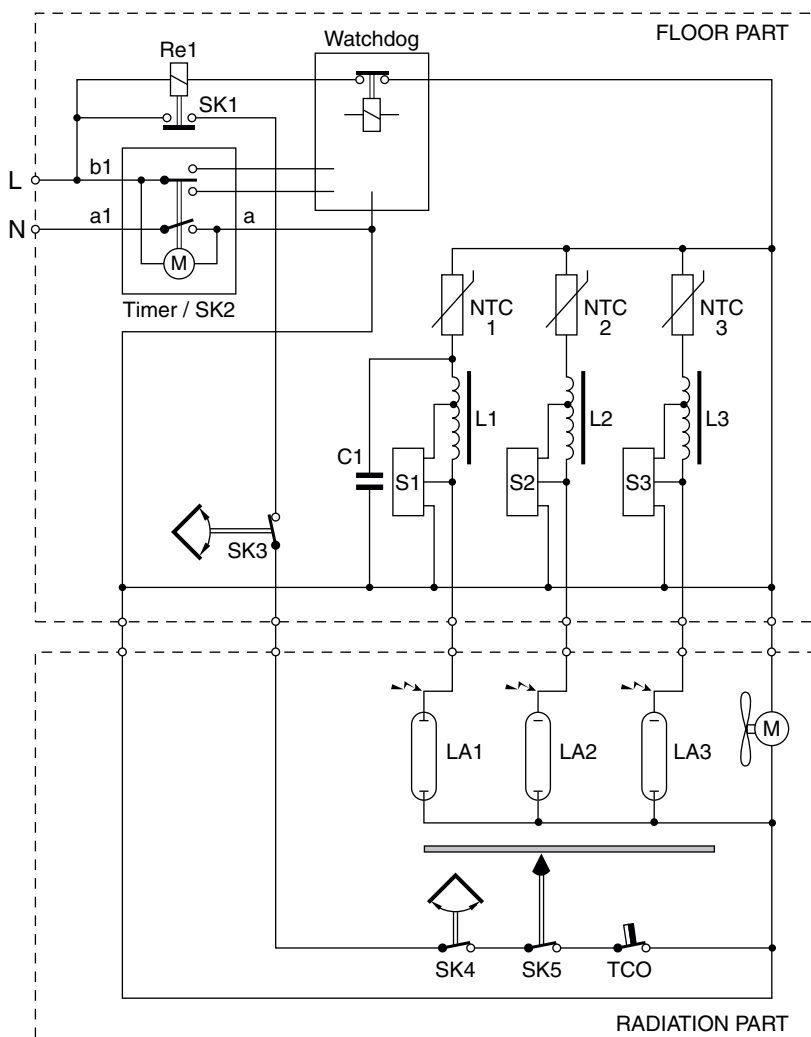
REPAIR INSTRUCTIONS

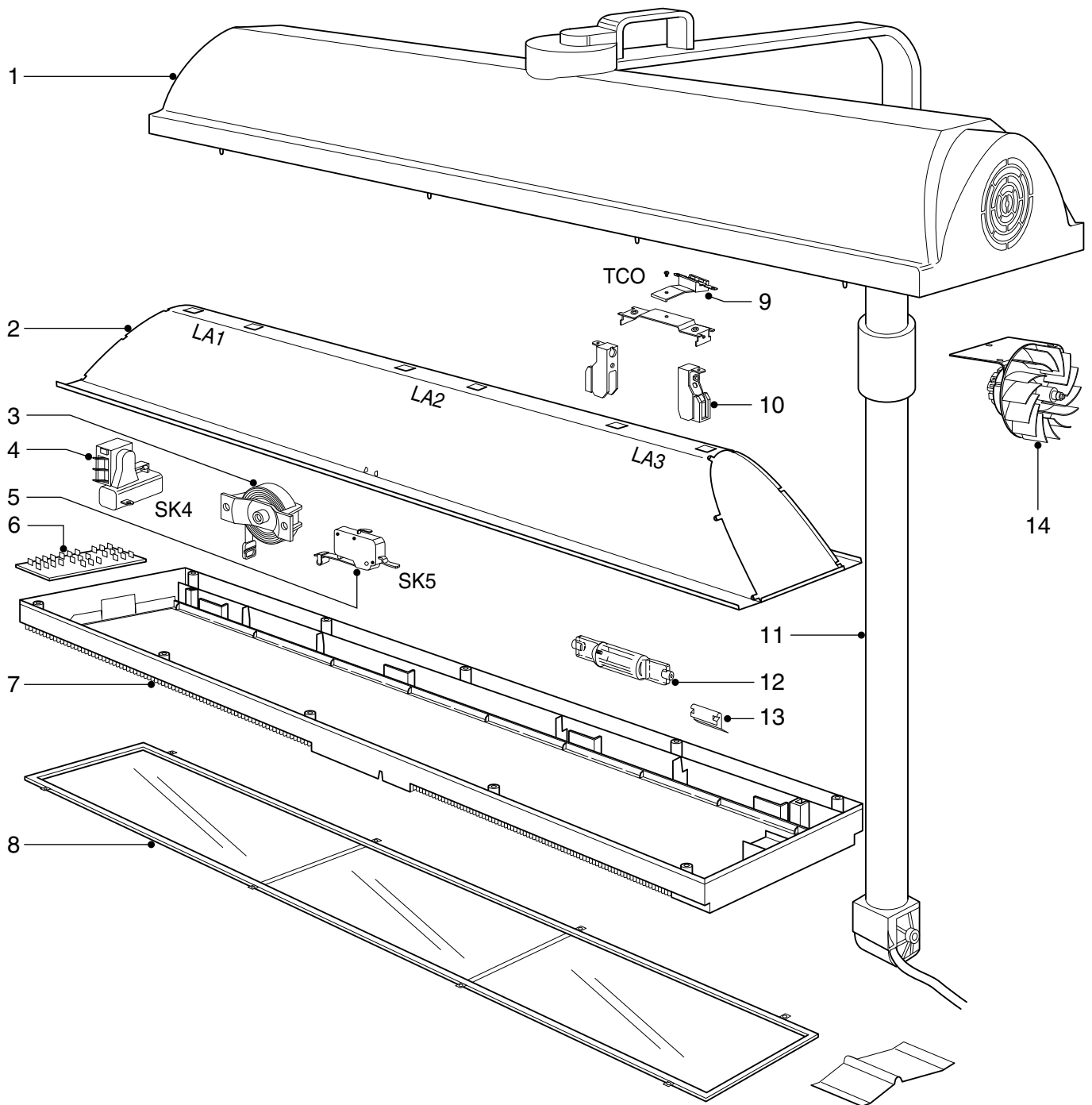
- The wheel can be replaced after the decorative cap has been removed by means of a small screwdriver.
- A burned NTC resistor or overheated wiring points to a wiring fault at the connecting block (item 21).

MISCELLANEOUS

- No specific issues.

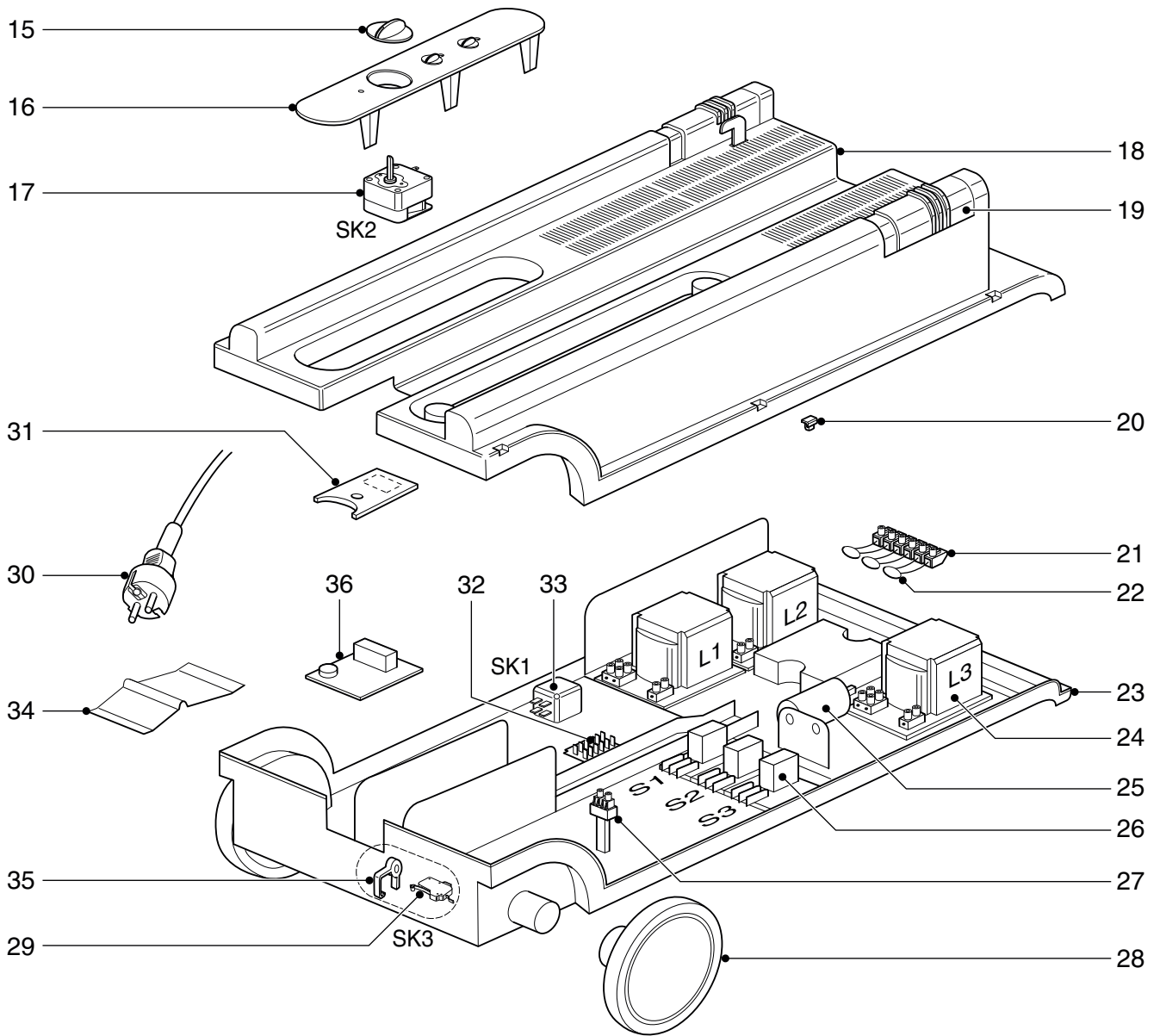
Electrical diagram





Item	Service code	Description
1	4222 062 96500	Cover radiation part
2	4222 062 95620	Reflector
3	4222 062 95020	Distance indicator
4	4822 277 11375	Ball switch
5	4822 271 30619	Micro switch
6	4822 267 10902	PCB connector
7	4222 062 96510	Housing radiation part

Item	Service code	Description
8	4822 466 62246	Glass pane white
9	4822 252 20325	Automatic cut out 100 °C
10	4822 325 20102	Lamp holder
11	4222 062 95450	Stand complete
12	4822 134 30032	HPA flexpower 400-600
13	4822 492 90188	Reflector clamp
14	4222 062 95650	Motor with fan



Item	Service code	Description
15	4222 062 96520	Timer knob
16	4222 062 96530	Timer cover
17	4222 062 96580	Timer 45 min. one fault safe
18	4222 062 96540	Cover floor part
19	4222 062 95460	Lock knob
20	4222 062 96550	Set of props 6+3
21	4222 062 94570	Connecting block 8S
22	4222 062 94580	NTC resistor
23	4222 062 96560	Housing floor part
24	4822 146 10935	Ballast 500 W/230 V
25	4822 124 40701	Capacitor 25 µF/250 V (CH only)

Item	Service code	Description
26	4822 219 80605	Starter SN58 spec.
27	4822 265 20234	Connecting block 2S
28	4822 528 11272	Wheel
29	See item 5	
30	4222 062 95810	Mains flex EU
31	4222 062 96570	Mains cord cover
32	4222 062 95030	PCB with 2 x 6 tabs
33	4822 280 60513	Relay 230 V
34	4822 492 90187	Flat spring
35	4822 402 10789	Lever
36	4222 062 96590	Watch dog 45 min.

WIRING DIAGRAM

HP8540

